

evolve.



leave the time to us

---

## about us

---



**20** years  
old



**12** experienced  
in-house experts

**730** annual  
projects



full-service  
property  
development  
agency



nationwide

expertise across  
REVIT, AutoCAD,  
VECTORWORKS,  
3D visualising &  
walk-throughs



# DNA

---

*passion, drive  
and tenacity*

our passion, drive  
and tenacity is  
replicated through all  
of our work, always  
delivering excellence

*strong  
work ethic*

our team at evolve  
has a can-do attitude

*we deliver  
- every time*

we deliver when we  
say we will, no excuses

*close team*

we are a close team  
who support each  
other to deliver the  
evolve brand ethics

*delivery when  
challenged*

we deliver to our  
clients' high  
expectations especially  
when challenged

*building trust*

we build trust with  
our clients by  
providing a reliable  
service every time

*proactive  
communication*

we proactively  
communicate to ensure  
each stakeholder is  
kept up to date at  
every stage





## survey

producing the information your projects require, quickly & cost-effectively, both nationally and internationally.

surveys completed using RTC360 laser scanning equipment and survey scan 'cloud' software, ideal for speed and accuracy.

fully compliant with BIM process - building information modelling, collaborate in real time across multi disciplines and stakeholders.

*our fully equipped  
in-house team are fluent in*

revit

vectorworks

autocad

3D visulisation

walk-throughs







*we'll provide you with:*

full construction drawing  
packages

site enabling works,  
foundation etc

services drawings

MEP construction drawings

## architecture

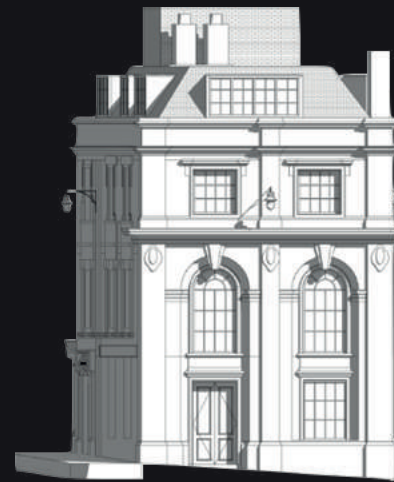
full range of architectural  
services covering all  
client requirements from  
survey, topographical,  
schematic proposal and  
construction detailing.

experienced team using  
all software options in  
the architecture field.  
AutoCAD and Revit  
(compliant to latest BIM  
requirements).



revit

full architectural drawing  
packages produced to BIM  
standards using the latest  
Revit software



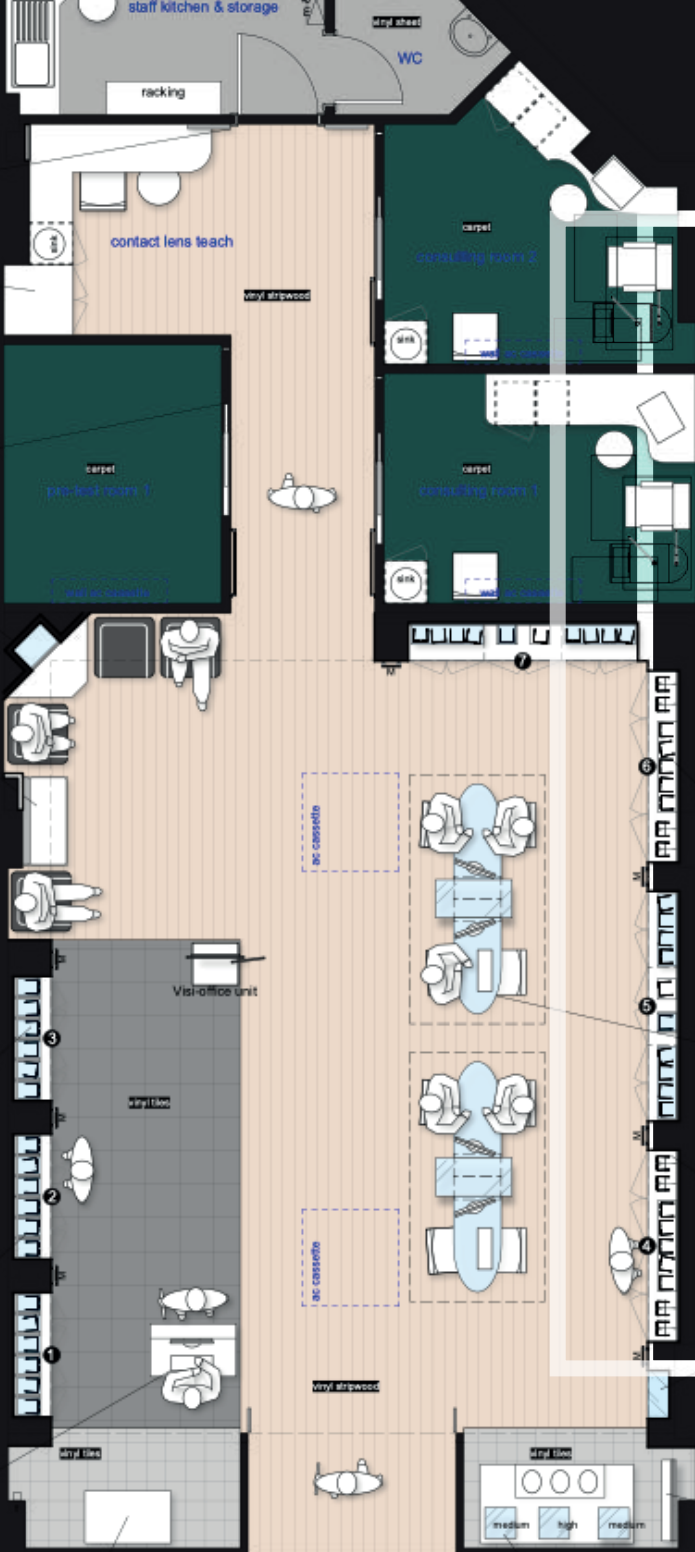


## point cloud survey

using the latest laser scanning technology, we can provide you with an accurate point cloud, BIM compliant. which our clients can use to produce drawings, or we can produce survey drawings in AutoCAD or REVIT. the point cloud is then retained for future project requests.







*we'll provide you with:*

space planning surveys of  
existing location

detailed space planning  
drawings using a wide range  
of software packages

drawings easily compatible  
with 3D visualizing software if  
required

quick, accurate, as built  
drawing information

## space planning

our clients benefit from  
our experienced, reliable  
and cost effective space  
planning service - our  
team of technicians will  
quickly understand your  
needs, propose the best  
software package for the  
project - and then create  
a dedicated team to  
ensure consistent quality,  
reliable service and  
deadline completion.



## design

whether you require a locally relevant design or a uniformed roll out, we can provide original designs and concepts to fit your brief

*we'll provide you with*

schematic and design  
intent drawings

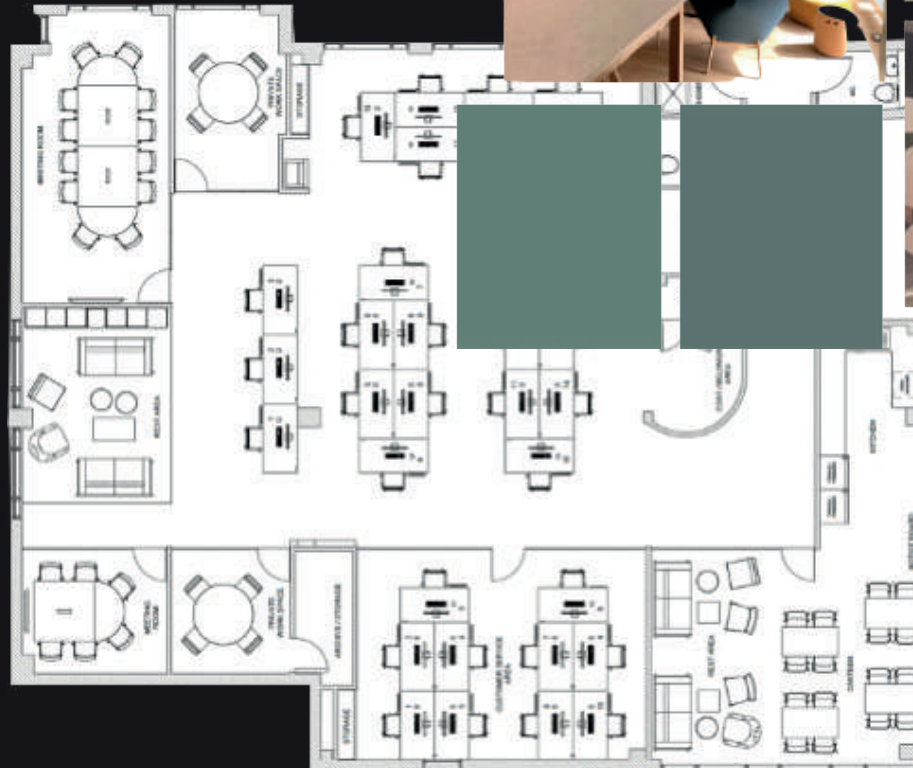
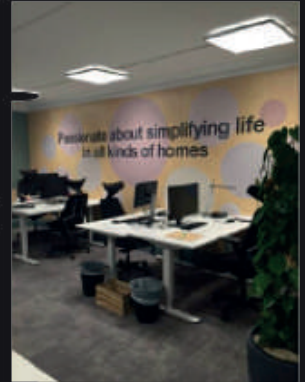
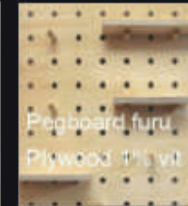
3D visualising

3D modelling

walk-through visualising



design





# project management

proven capability delivering 100's of drive thru projects across the UK, delivered on time and to budget, to an exceptional standard

- *we'll cover all project planning and procurement*
- *the entire development will be handled by your dedicated account manager*
- *we'll handle all contractor, supplier and stakeholder liaison*
- *your project will be delivered on time, within budget and to the exceptionally high standards that we demonstrate on every project*



evolve.